

# housings Plus 3P SX

for cartridges with standard flat seals



Medium Junior Master Senior

## APPLICATIONS

Filtration and treatment of water with neutral pH and drinking water.

**Domestic use:** filtration and treatment of drinking water, protection of taps, boilers, washing machines, and other installations.

**Technical use:** pre-filtration, micro-filtration; protection of pumps, heating systems, softeners, demineralising and chlorine-removing appliances, reverse osmosis units.

## WORKING CONDITIONS

Max working pressure \_\_\_\_\_ 8 BAR

Max working temperature \_\_\_\_\_ 45°C

## SPECIFICATIONS

Non-toxic materials, suitable for drinking water.

**Head and ring nut:** reinforced polypropylene.

**Transparent bowl:** SAN.

**O-ring:** ETP.

**Breather-valve:** body polypropylene, O-ring ETP.

**IN/OUT threads:** CW 614 N brass inserts.

Cartridge height	housings with transparent bowl AS IN/OUT female threads with FO brass inserts	IN/OUT threads	mm	
			A	B
5"	Medium Plus 3P MFO SX AS	1/2"	191	133
5"	Medium Plus 3P AFO SX AS	3/4"	191	133
5"	Medium Plus 3P BFO SX AS	1"	197	145
7"	Junior Plus 3P MFO SX AS	1/2"	241	133
7"	Junior Plus 3P AFO SX AS	3/4"	241	133
7"	Junior Plus 3P BFO SX AS	1"	247	145
10"	Senior Plus 3P MFO SX AS	1/2"	315	133
10"	Senior Plus 3P AFO SX AS	3/4"	315	133
10"	Senior Plus 3P BFO SX AS	1"	321	145
20"	Master Plus 3P MFO SX AS	1/2"	571	133
20"	Master Plus 3P AFO SX AS	3/4"	571	133
20"	Master Plus 3P BFO SX AS	1"	577	145



## VARIANTS available on minimum quantity

**FP** female plastic IN/OUT threads, BSP type 1/4", 3/8", 1/2", 3/4", 1".

**MP** male plastic IN/OUT threads, BSP type.

**AB** housings with opaque bowl, impermeable to the light.

**FP-NPT** female plastic IN/OUT threads, NPT type 3/4", 1".



## accessories



-U- Spanner



wall bracket



wall bracket screws



3/4" and 1" brass nipples with O-ring



5", 7", 10" diffuser tubes



# housings Duplex Plus 3P SX

for cartridges with standard flat seals



Medium Junior Master Senior

## APPLICATIONS

Filtration and treatment of water with neutral pH and drinking water. The exclusive Duplex housings allow faster and safer installation of serial filtration units.

**Domestic use:** filtration and treatment of drinking water, protection of taps, boilers, washing machines, and other installations.

**Technical use:** pre-filtration, micro-filtration; protection of pumps, heating systems, softeners, demineralising and chlorine-removing appliances, reverse osmosis units.

## WORKING CONDITIONS

Max working pressure \_\_\_\_\_ 8 BAR

Max working temperature \_\_\_\_\_ 45°C

## SPECIFICATIONS

Non-toxic materials, suitable for drinking water.

**Head and ring nut:** reinforced polypropylene.

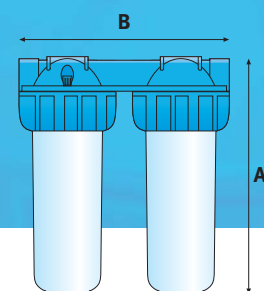
**Transparent bowl:** SAN.

**O-ring:** ETP.

**Breather-valve:** body polypropylene, O-ring ETP.

**IN/OUT threads:** CW 614 N brass inserts.

Cartridge height	housings with transparent bowl AS IN/OUT female threads with FO brass inserts	IN/OUT threads	mm	
			A	B
5"	Medium Duplex Plus 3P AFO SX AS	3/4"	191	275
5"	Medium Duplex Plus 3P BFO SX AS	1"	191	275
7"	Junior Duplex Plus 3P AFO SX AS	3/4"	241	275
7"	Junior Duplex Plus 3P BFO SX AS	1"	241	275
10"	Senior Duplex Plus 3P AFO SX AS	3/4"	315	275
10"	Senior Duplex Plus 3P BFO SX AS	1"	315	275
20"	Master Duplex Plus 3P AFO SX AS	3/4"	571	275
20"	Master Duplex Plus 3P BFO SX AS	1"	571	275



## VARIANTS available on minimum quantity

**FP** female plastic IN/OUT threads, BSP type 3/4".

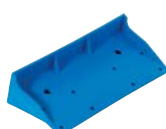
**AB** housings with opaque bowl, impermeable to the light.



## accessories



-U- spanner



wall bracket



wall bracket screws



3/4" and 1" brass nipples with O-ring



5", 7", 10" diffuser tubes